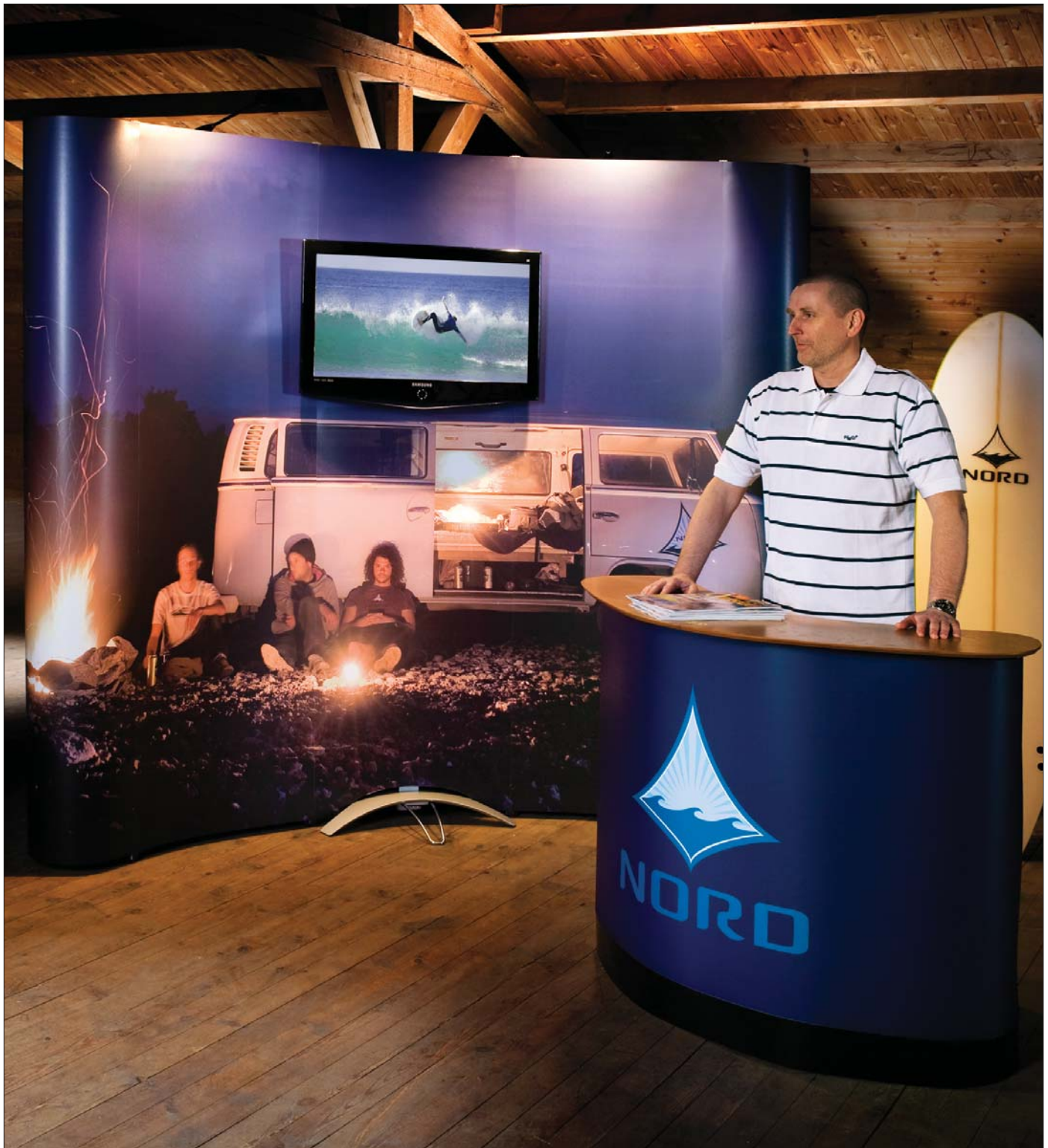


# Expand MonitorStand



Bring your message to your target audience.



When the product is used with Expand 2000, the panels are cut to fit the foot and the monitor.



Expand MonitorStand freestanding with monitor



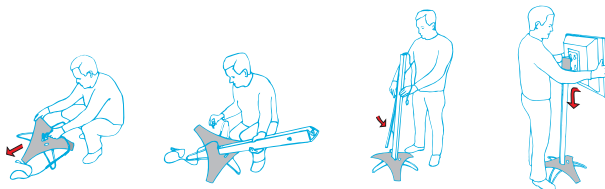
A view of the Expand 2000 from the back with an integrated Expand MonitorStand.

### Expand MonitorStand

LCD screens are a whole new type of media within portable displays and with the Expand MonitorStand you can join this marketing revolution. By combining printed and moving images, you will strengthen your message and image. The Expand MonitorStand can be used in three ways: as a freestanding monitor holder, completely or partially

integrated with the Expand 2000. When the product is used with Expand 2000, the panels are cut to fit the foot and the monitor. The pole has a channel where you can easily hide the cables and wires.

**Please note:** an LCD monitor is not included and this product is not designed for plasma monitors. We recommend LCD monitors with screens 32" or smaller.



Foot Height x Diameter:  
3 <sup>5</sup>/<sub>16</sub>" x 23 <sup>1</sup>/<sub>4</sub>" (100 mm x 590 mm)

Pole Height:  
48 <sup>1</sup>/<sub>16</sub>" , 68 <sup>7</sup>/<sub>8</sub>" & 76 <sup>3</sup>/<sub>4</sub>" (122 cm, 175 cm, 195 cm)